



May 2017

President's Notes By Jason Conner, CFE



As everything around us blooms and hatches with the renewal of spring, it's a bit incongruous that our chapter year is nearing its end. We only have one more CPE luncheon, then the June Social. Time definitely flies!

It is election season. All chapter members should have received an email notification regarding the ballot. We always have great candidates! This year, we have Mark Ingram and Phil McGovern running for treasurer. We also have Phyllis Pickett, David Shipley, and Teri Williams running for the open board member at-large position. The polls open at 8:00 am

on May 12th, and close at 5:00 pm on June 6th. Vote soon, but not often!

Congratulations to Drew Hawkins (Vice President) and Melissa Boaz (Secretary)! They both ran unopposed.

It is also time to get those applications in for the CFE prep course giveaway and for chapter scholarships. The deadline for the prep course giveaway is June 1st. The deadline for scholarships is this Friday, May 12th!

I hope to see everyone at the luncheon on May 18th and at the social on June 8th!

Calendar of Events	2
CFE Prep Course Giveaway	3
CPE Certificate Information	3
Event Sign-in Sheets	3
Info re: CPE Suspensions	4
Chapter Scholarships	4
Social Media	4
Important Meeting Information	5
New Members	6
National ACFE Conference	6
Chapter Elections	6
May Luncheon Information	7
Important New Parking Info	7
May Speaker	8
Member Spotlight	9
Chapter Library	10
Member Spotlight Volunteers Needed	10
Speaker Search	10
Newsletter Articles	10
National Conference Contest Points	11
Board and Officers Contact Info	12
Contact Us	13
Parking Pass	14

2016-2017 Calendar of Events

We will hold our 2016 – 2017 CFE luncheons at the Scarritt-Bennett Center located at 1008 19th Avenue South in Nashville. You will find this year's calendar below. All luncheons will begin at 11:30 am. The upcoming event dates for this year are:

5/18/2017	Luncheon
6/8/2017	Member Social *
6/18-23/2017	National Conference in Nashville

* member-only events



The Middle Tennessee Chapter of CFE celebrates our members this year! We are focusing on our members, bringing them the best quality training events and CPE earning luncheons that we can, while also allowing our members to share their wealth of knowledge in detecting and fighting fraud. To do that, we are asking members to step up and out at a luncheon and

share a case study, a technique, or a scheme that others can benefit from and apply in their own practice. Our members are important! They have important and valuable jobs where they try to retain various resources for their companies and clients while making sure the expenditures of those resources are done without fraud, waste or abuse.



Please celebrate with us and join us in a CPE event or social!



CFE Prep Course Giveaway

The Middle Tennessee Chapter, ACFE, has a drawing each year to give away a CFE Exam Prep Course, valued at \$745 (member price) to a chapter member who is not yet a CFE. To be eligible:

1. Contestant must be a member of the Middle Tennessee Chapter of the ACFE, in good standing for at least six (6) months (prior to the date of the drawing).
2. The Contestant must have not yet earned their CFE certification.
3. The Contestant must be eligible and willing to meet all requirements to become a Certified Fraud Examiner and sit for the CFE exam by December 31st of the year in which the contestant is determined to be the winner of the contest and receives the prep course.
4. Should it be determined the winning Contestant has not met the requirements set forth above, the winning contestant must reimburse the Chapter for the cost of the prep course by January 31st in the year following the drawing (i.e. Contestant wins the prep course in June 2017; reimbursement would be due January 2018).



To Enter:

All those who are eligible and agree to the terms of the drawing should contact Mark.Ingram@tn.gov to enter the drawing and submit the *CFE Exam Prep Course Giveaway Contest, Agreement to Terms and Conditions* form no later than June 1st.

CPE Certificates

How do attendees to events get a CPE certificate? Certificates are emailed out after the event. If you did not get a certificate, it may be that you did not pay, failed to sign in at the event, or gave a wrong email address. Please remember to update your information on the new chapter website to ensure that you will receive your certificate promptly.



Please email info@middletennesseecfe.org to request a copy of your CPE certificate.

Event Sign-In Sheets



Remember to complete the sign-in sheet at the event registration table to be eligible to receive your CPE credits and certificate. The Chapter will email your CPE certificate to you after the event. Once the event has ended, the sign-in sheets are completed. Signatures of the attendees on the sign-in sheet will be the only valid evidence of attendance. If you do not sign in, you waive your right to receive CPE credits.

Important Information Regarding CPE Suspensions



According to <http://www.acfe.com/myannouncements.aspx>, beginning January 1, 2015, CFEs with five or more years of CPE suspensions will be placed into Associate member status. Should these individuals want to reinstate the CFE credential they will be required to take the CFE Exam. If you have any questions about this new requirement, contact the ACFE at 1-800-245-3321. If a CFE does not certify compliance on an annual basis, their credential will be placed into suspension. Suspended status prohibits individuals from representing themselves as CFEs to the general public and using the credential in any form.

Chapter Scholarships

Our chapter gives away thousands of dollars in scholarships each year to deserving students. Please see our chapter website at <https://middletennesseecfe.wildapricot.org/Scholarships> for more information.



Social Media



Our chapter is now on social media! We are on Facebook at www.facebook.com/ACFENashville and on Twitter @AcfENashville. Please like and follow us! A big thanks to Board Member-at-Large Barry Pruitt for getting us set up. The Chapter plans to set up a LinkedIn page as well in the near future.

Important Meeting Information

Luncheon Reservation/Cancellation Policy—Please Take Note!



Please be sure you make reservations for the luncheons prior to attending. We need the reservations to plan appropriately for our attendees and to eliminate confusion at the luncheons. You will receive a confirmation email after you submit your reservation.

Luncheons are \$10.00 for members who make their reservations by the reservation deadline, usually the COB one week prior to the luncheon. For members who make a reservation but do not attend or call to cancel, the cost is \$20.00. Individuals who attend without making a reservation will also be charged \$20.00.

To cancel your reservation and avoid being invoiced for the event, you must notify the reservationist at mary.cole@nashville.gov before the reservation deadline (usually one week prior to the date of the event). If you cancel after the deadline or fail to appear at the event, you will be invoiced for the full per-attendee cost, including other fees that apply as deemed appropriate by the Board. Any pre-paid fees that you have will be applied to the invoiced amount.

Any invoices that are unpaid after 60 days will result in the suspension of membership in the Middle Tennessee Chapter under the current Chapter Bylaws Section 3.09, Non-payment of Dues*. As a result of suspension, any reservations you make for future events will not be **ACCEPTED** and you will not be allowed to attend Chapter luncheons or take advantage of member benefits until your outstanding invoices are paid.

We typically have a waiting list for our events, so if you must cancel your reservation, **PLEASE** notify the reservationist at mary.cole@nashville.gov as soon as possible, or you may have someone attend in your place to avoid being invoiced for the luncheon. If you have someone take your place, you must notify the reservationist or have the substitution notify the reception/sign-in table at the luncheon when signing-in.

Other exceptions may apply in extreme situations (i.e. death of a family member) and will be reviewed on a case by case basis at the discretion of the Chapter Board at the member's request.

Members, if you are inviting nonmembers to attend who are not first time attendees, please be sure that they are fully aware of their costs and our cancellation and invoicing policy. First-time guests eat free. After a guest's first visit, he or she will be charged \$20.00 according to the non-member fee schedule. No Free Guests are allowed at joint luncheons, due to elevated costs, or Member Benefits Events, such as the December Luncheon or January Member Benefit Training Day.

If you have any questions concerning the luncheon costs or the Chapter's cancellation policy, please feel free to contact Mark Ingram, Chapter Treasurer at mark.ingram@tn.gov.

New Members

We would like to welcome the following new members to our chapter!

Treesie Farmer	AJG
Malisa Ford	
Brandon Taylor	Student Member, MTSU



28th Annual ACFE Global Fraud Conference

June 18-23, 2017

Nashville, TN



This year's ACFE Global Fraud Conference will be held right here in Nashville at the Music City Center! Thank you to all of the chapter members who volunteered to work at the conference. We have filled all of the volunteer spots!

Information about the conference is available at <http://www.fraudconference.com/>. There are registration discounts available for groups. Please contact Mark Ingram, Chapter Treasurer, at mark.ingram@tn.gov for more information.

Chapter Elections

It's time for chapter elections! Voting opens May 12 at 8:00 am and closes on June 6 at 5:00 pm. Chapter members will receive an email with instructions for voting. This year, we have Mark Ingram and Phil McGovern running for treasurer. We also have Phyllis Pickett, David Shipley, and Teri Williams running for the open board member-at-large position. Be sure and cast your vote! The new board will be sworn in at the June social.



May Luncheon Information



We will hold our April luncheon on Thursday, May 18, 2017, at 11:30 am in the Raintree Room at the Scarritt-Bennett Center. Scarritt-Bennett is located at 1008 19th Avenue South, Nashville, TN 37212. Directions are available at <http://www.scarrittbennett.org/about/maps-directions/>

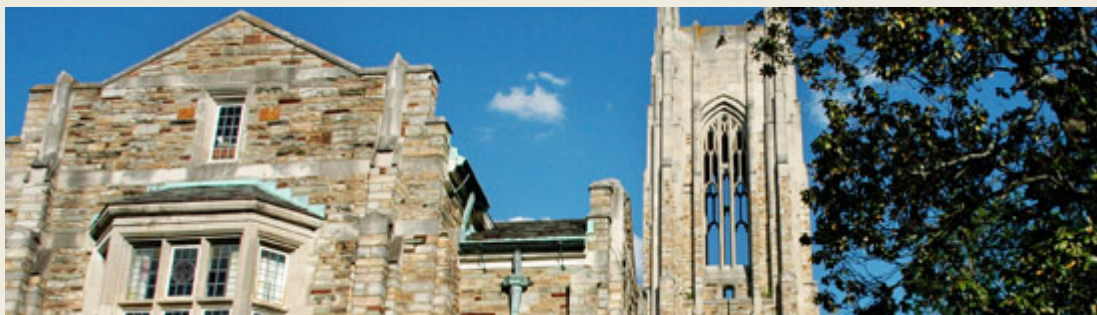
Important New Parking Information

Due to issues with unauthorized parking by Vanderbilt students, **Scarritt-Bennett is now requiring parking passes for those attending events on its campus.** Scarritt-Bennett asked that our luncheon attendees place the parking pass at the end of this newsletter on their dashboard when parking at Scarritt-Bennett Center. You can also download the parking pass at

<http://www.middletennesseecfe.org/resources/Documents/Luncheon%20parking%20pass%20PDF.pdf>.

This is effective immediately for the November luncheon, and you can use the same pass for subsequent luncheons. Please note that this pass does not guarantee parking will be available. Scarritt-Bennett staff will begin taking license plates and towing repeat offenders without an identifiable pass.

Scarritt-Bennett visitor parking is available in Parking Lot A or Parking Lot B. Please be aware that parking can be limited due to other events held on the same day as ours. Other parking options include the Wesley Place Garage on Scarritt Place between 19th and 21st Avenues or the meters along 19th Avenue. Approximate prices are \$1.00 per half hour and the parking meters are \$1.50 per hour in the Central Business District. Members may want to consider carpooling or bringing cash or change to pay for parking if necessary.

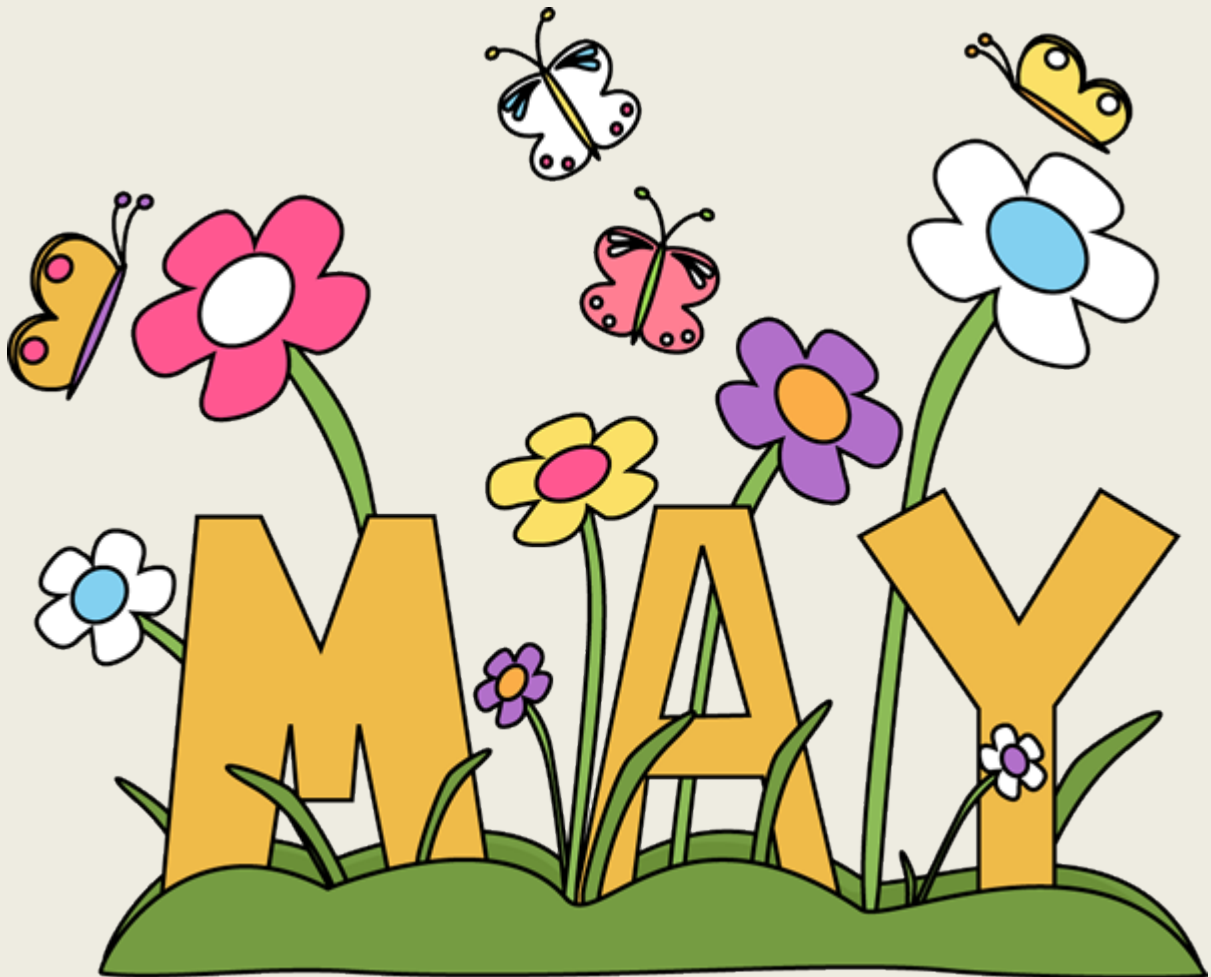


May Speaker Information

Our May speaker is Rene Brison with the Tennessee Office of the Comptroller of the Treasury. She will be presenting a Fraud Talk.

L. Rene Brison, CPA, CFE
Deputy Chief Investigator, Division of Investigations
Tennessee Comptroller of the Treasury

Rene has worked with the Comptroller's Office since 1983, and has been involved in hundreds of investigations of local governments, state agencies, and other publicly funded entities, many of which resulted in prosecution. She has testified before grand juries, at sentencing hearings and at trials related to her investigations. In fulfilling her responsibilities, Ms. Brison has worked closely with certified public accounting firms, local governments and state agencies, the TBI, the FBI, local District Attorney Generals, local law enforcement groups, and numerous other federal, state, county, and local organizations. In addition, she has conducted training sessions related to internal controls and fraud throughout the state.

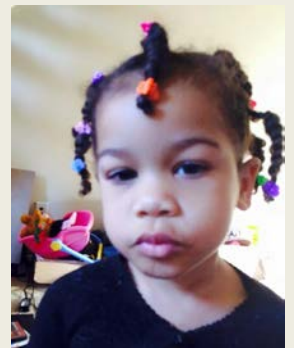


Member Spotlight Jacqueline Cherry, CFE



Jacqueline Diane Cherry was born in Savannah, TN. She now resides in Hendersonville, TN after moving from Bowling Green, KY where she lived for the past ten years. She attended Hardin County High School (HCHS) where she was active in several clubs including the BETA Club, where she served on the Executive Committee, National Honor Society, and the HCHS “the Pride” Marching Band. Jacqueline graduated in May 1983 in the top 5% of her class. She received an academic scholarship to Middle Tennessee State University (MTSU) and earned a Degree in Business Finance in December 1987. It was at MTSU that she became a member of Alpha Kappa Alpha Sorority Inc., where she served as both the Anti-Basileus and Basileus in 1986 and 1987.

Jacqueline was selected as a Fraud Investigator II for the State of Tennessee Department of Commerce and Insurance, Insurance Division in May 2015. Eventually the unit joined forces with the Security Division and became the Financial Services Investigations Unit. As an investigator, Jacqueline performs investigative work involving allegations of fraud, waste or abuse of public funds or property. Her responsibilities include interviews, evidence review, preparation of working papers, preparing reports, and working with other agencies, including law enforcement agencies and district attorneys general. She brings to this position twenty years of experience as a Property and Casualty Claims Specialist and a Work Comp Enforcement Officer in both Tennessee and Kentucky. She recently earned her CFE in May 2016. She is also a member of the Reid Institute, An Association of Reid Trained Investigators.



Aaliyah Cherry



Alexandra Cherry

Jacqueline has a passion for helping others. She has volunteered as a Big Sister for the Big Sister, Big Brother Organization, a mentor for the foster care “aging out” program and was a Court Appointed Special Advocate (CASA) in the foster care system while living in Bowling Green. Her love of reading has led her to volunteer with Book’em, an organization under Reading is Fundamental (RIF), where she reads to a local kindergarten class at a Davidson County Metro School and enjoys the privilege of passing out new books to the students and encouraging them to read more. She serves on the Event Committee for Book’em as well. Jacqueline credits a good education, reinforced by continuing education to her success in life. She also volunteers as a mentor for the TN Achieves program in partnership with Tennessee Promise.

You will see Jacqueline, who will turn 52 years old in November, smile brightest when she speaks of her daughter, Alexandra and her granddaughter, Aaliyah. Her motto in life is “Refuse to Sink”.

Middle Tennessee ACFE Chapter Library

Did you know that the Middle Tennessee Chapter has a library of fraud-related books that are available to members? To check out books, contact Suzanne Smotherman, chair of the Library Committee, at (615) 253-2020 or Suzanne.Smotherman@tn.gov. The library is currently housed on the 16th floor of the James K. Polk building.



Member Spotlight Volunteers Needed



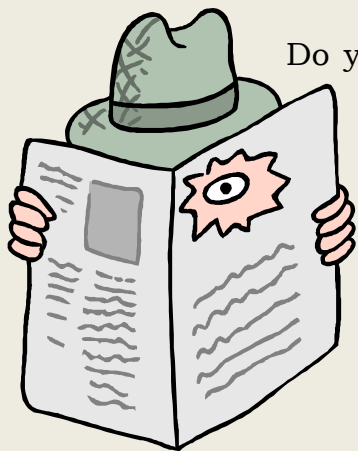
The Newsletter Committee is looking for volunteers to be featured in the Member Spotlight! If you would like to volunteer, please contact a member of the Newsletter Committee. It's a great way to introduce yourself to the chapter!

Speaker Search

Our chapter is always on the lookout for speakers for luncheons, the Member Benefit Day, and the Annual Fraud Conference. If you know of someone who might be willing to speak, please contact the chapter Training Director, Suzzie Singleton, at Suzzie.Singleton@cot.tn.gov.



Newsletter Articles



Do you have a great article to contribute to the Middle Tennessee Chapter, ACFE newsletter? If so, we would love to hear from you! Please contact a member of the Newsletter Committee with your ideas and articles. Remember, you receive points for your articles that count toward the trip to the National ACFE conference! Also, if you note any corrections that need to be made, please contact one of us.

National ACFE Conference Contest Points System



Congratulations to Barry Pruitt, who won an all-expense paid trip to the 2017 national conference, which will be held in Nashville. Start compiling your points for the 2018 national conference! To be eligible for the contest, you must be a member of MTACFE, in good standing, for at least 12 months, and you must have attended a prior MTACFE annual fraud conference. Submit a breakdown of your total points earned between January 2017 and December 2017 to mark.ingram@tn.gov by February 15, 2018. Please have supporting documentation available for your points.

<u>Category</u>	<u>Points</u>
Attending Monthly Chapter Meeting	1 point per meeting
Publish Article in Chapter Newsletter	2 points
Sponsoring a New Member	2 points per new member
Publish member profile in Chapter Newsletter	1 point
Contribution to “Been There, Said That, Done That”	1 point/contribution/month
Publication of Case Results	2 points
Participating as a speaker in the Chapter Speaker’s Bureau	2 points per engagement
Publication of an article in the Association’s <i>Fraud Magazine</i>	3 points
Attending the Chapter’s Annual Fraud Conference	2 points
Service on Chapter Committee	2 points



ACFE Middle Tennessee Chapter 2016- 2017 Chapter Officers, Board Members, and Committee Members

CHAPTER OFFICERS AND BOARD MEMBERS

President	Jason Conner, CFE	747-5398	jason.conner@cot.tn.gov
Vice-President	Kesha Thomas, CFE, MCJ	747-5397	kesha.thomas@cot.tn.gov
Past President	Nathan Abbott, CFE, CISA, EA	401-7841	nathan.abbott@cot.tn.gov
President Emeritus	Dennis Dycus, CFE, CPA, CGFM	794-0836	dfdcpa@bellsouth.net
Treasurer	Mark Ingram, CFE	532-5060	mark.ingram@tn.gov
Secretary	Melissa Boaz, CFE, CPA, CGFM, CGMA	747-5305	melissa.boaz@cot.tn.gov
Training Director	Suzzie Singleton, CFE, CGFM	401-3037	suzzie.singleton@cot.tn.gov
Member at Large	Andrew Hawkins, CFE	401-7743	andrew.hawkins@cot.tn.gov
Member at Large	Barry Pruitt, CFE, CFI, CCTA	270-780-2971	bpruitt@houchensindustries.com
Member at Large	Sharon Matheny, CGFM	744-4326	sharonmatheny@hotmail.com

COMMITTEE CHAIRS AND MEMBERS

Website	Nathan Abbott, CFE, CISA, EA (Chair)	401-7841	nathan.abbott@cot.tn.gov
Library	Suzanne Smotherman, CFE, CPA (Chair)	253-2020	suzanne.smotherman@tn.gov
	Melissa Boaz, CFE, CPA, CGFM, CGMA	747-5305	melissa.boaz@cot.tn.gov
Newsletter	Melissa Boaz, CFE, CPA, CGFM, CGMA (Chair)	747-5305	melissa.boaz@cot.tn.gov
	Jennifer Whitsel, CFE, CPA, CGMA	747-5265	jennifer.whitsel@cot.tn.gov
	Melinda Weir, CFE	532-0955	melinda.weir@tn.gov
Hospitality	Mary Cole, CFE, CPA, CGFM (Chair)	862-6407	mary.cole@nashville.gov
	Nicolette Hudson	747-5293	nicolette.hudson@cot.tn.gov
	Judy Tribble, CFE, CPA	253-1760	judy.tribble@tn.gov
	Linda Ciprich, CFE, CIA	366-4441	linda.ciprich@tbr.edu
	Martin Brown, CFE, CPA	747-5391	martin.brown@cot.tn.gov
Membership	Demetra Pulley, CFE, MBA/HRM, CICA (Chair)	327-6424	dpulley@mmc.edu
	Kesha Thomas, CFE, MCJ	747-5397	kesha.thomas@cot.tn.gov
	Nicolette Hudson	747-5293	nicolette.hudson@cot.tn.gov
	Tom Stoquert, CFE, MBA	507-6996	thomas.e.stoquert@tn.gov
	Jessica Scouten, CFE, CPA, MAFF	346-2436	jscouten@kraftcpas.com
Scholarship/ Outreach	Scarlet Sneed, CFE, CPA, CGFM (Chair)	747-5243	scarlet.sneed@cot.tn.gov
	Danny Hall, CFE	741-4314	danny.hall@tn.gov
	Phil Job, CFE, CPA	401-7895	phil.job@cot.tn.gov
	Bridget Carver, CFE (Chair)	401-7959	bridget.carver@cot.tn.gov
	Melissa DeBerry, CFE	747-5214	melissa.b.deberry@cot.tn.gov
Job Placement	Amanda Cain, CFE	747-5364	amanda.cain@cot.tn.gov
Historic	Britt Wood, CFE, CPA, CGFM, CISA, ACDA (Chair)	401-3006	britt.wood@cot.tn.gov
	Cindy Vaughn, CFE	428-0969	cynthia.vaughn@tn.gov
	Vincent Finamore, CFE	401-7898	vincent.finamore@cot.tn.gov
Nominating	John Gullett, CFE, CPA, LNHA (Chair)	225-1814	jgullett@tsvh.org
	Britt Wood, CFE, CPA, CGFM, CISA, ACDA	401-3006	britt.wood@cot.tn.gov
	Andrew Hawkins, CFE	401-7743	andrew.hawkins@cot.tn.gov
Social Media	Barry Pruitt, CFE, CFI, CCTA (Chair)	270-780-2971	bpruitt@houchensindustries.com
	Teri Williams	782-3953	twilliam@nashville-mdha.org
	Kristina Straumfjord, CFE	224-0832	kristina.straumfjord@mapcoexpress.com
	Jessica Scouten, CFE, CPA, MAFF	346-2436	jscouten@kraftcpas.com
	Danielle Gwin, CFE	401-3038	danielle.gwin@cot.tn.gov
Conference	Bob McCloud, CFE, CGFM	747-5210	bob.mccloud@cot.tn.gov
	Mary Cole, CFE, CPA, CGFM	862-6407	mary.cole@nashville.gov

NOTE: Chapter officers and board members comprise the Annual Fraud Conference Committee

Contact Us



Middle Tennessee Chapter, Association of Certified Fraud Examiners:

Email: info@middletennesseecfe.org

Website: www.middletennesseecfe.wildapricot.org

Mailing address: P.O. Box 198361
Nashville, TN 37219

Follow MTACFE in social media:



www.facebook.com/ACFENashville



www.twitter.com/acfenashville

Association of Certified Fraud Examiners Headquarters:

Email: memberservices@ACFE.com

Website: www.acfe.com

Mailing address: The Gregor Building
716 West Avenue
Austin, TX 78701

Phone: 800-245-3321

512-478-9000

Fax: 512-478-9297

Follow the ACFE in social media:



<https://www.linkedin.com/groups?mostPopular=&gid=66889>



<https://www.facebook.com/AssociationofCertifiedFraudExaminers>



<https://twitter.com/TheACFE>



<https://www.youtube.com/user/TheACFE>



Scarritt-Bennett Center



Scarritt-Bennett Parking Pass

Valid Day of Event Only

Scarritt-Bennett Center



Scarritt-Bennett Parking Pass

Valid Day of Event Only