



Middle Tennessee Chapter of the Association of Certified Fraud Examiners

June 2017

President's Notes By Jason Conner, CFE

The Examiner



Wait. This is my last one? Seriously? Sigh. . .

I have had a blast being president this year. I know everybody says it, but it's true, this year has flown by. I would like to thank the board of directors and all members for your help in making this a successful chapter year.

If you haven't voted yet, please do so. You have until 5:00 pm on June 6th. As a reminder, Mark Ingram and Phil McGovern are running for treasurer. Also, Phyllis Pickett, David Shipley, and Teri Williams are running for the open board member at-large position.

I look forward to seeing you at the June Social on the 8th. Also, for those who are attending the Global Fraud Conference, don't forget to register for the networking event and concert that our chapter is hosting on June 20th! All proceeds will benefit the ACFE Foundation. See <http://www.fraudconference.com/28th-concert/> for more information.

Time to hit the old dusty trail. . .

Calendar of Events	2
CFE Prep Course Giveaway	3
CPE Certificate Information	3
Event Sign-in Sheets	3
Info re: CPE Suspensions	4
Chapter Scholarships	4
Social Media	4
Important Meeting Information	5
National ACFE Conference	6
Chapter Elections	6
April Luncheon Minutes	7
May Luncheon Minutes	7
June Member Social	7
June Luncheon Information	8
Important New Parking Info	8
Member Spotlight	9
Chapter Library	10
Member Spotlight Volunteers Needed	10
Speaker Search	10
Newsletter Articles	10
National Conference Contest Points	11
Board and Officers Contact Info	12
Contact Us	13
Parking Pass	14

CFE Prep Course Giveaway

The Middle Tennessee Chapter, ACFE, has a drawing each year to give away a CFE Exam Prep Course, valued at \$745 (member price) to a chapter member who is not yet a CFE. To be eligible:

1. Contestant must be a member of the Middle Tennessee Chapter of the ACFE, in good standing for at least six (6) months (prior to the date of the drawing).
2. The Contestant must have not yet earned their CFE certification.
3. The Contestant must be eligible and willing to meet all requirements to become a Certified Fraud Examiner and sit for the CFE exam by December 31st of the year in which the contestant is determined to be the winner of the contest and receives the prep course.
4. Should it be determined the winning Contestant has not met the requirements set forth above, the winning contestant must reimburse the Chapter for the cost of the prep course by January 31st in the year following the drawing (i.e. Contestant wins the prep course in June 2017; reimbursement would be due January 2018).



To Enter:

All those who are eligible and agree to the terms of the drawing should contact Mark.Ingram@tn.gov to enter the drawing and submit the *CFE Exam Prep Course Giveaway Contest, Agreement to Terms and Conditions* form no later than June 1st.

CPE Certificates

How do attendees to events get a CPE certificate? Certificates are emailed out after the event. If you did not get a certificate, it may be that you did not pay, failed to sign in at the event, or gave a wrong email address. Please remember to update your information on the new chapter website to ensure that you will receive your certificate promptly.



Please email info@middletennesseecfe.org to request a copy of your CPE certificate.

Event Sign-In Sheets



Remember to complete the sign-in sheet at the event registration table to be eligible to receive your CPE credits and certificate. The Chapter will email your CPE certificate to you after the event. Once the event has ended, the sign-in sheets are completed. Signatures of the attendees on the sign-in sheet will be the only valid evidence of attendance. If you do not sign in, you waive your right to receive CPE credits.

Important Information Regarding CPE Suspensions



According to <http://www.acfe.com/myannouncements.aspx>, beginning January 1, 2015, CFEs with five or more years of CPE suspensions will be placed into Associate member status. Should these individuals want to reinstate the CFE credential they will be required to take the CFE Exam. If you have any questions about this new requirement, contact the ACFE at 1-800-245-3321. If a CFE does not certify compliance on an annual basis, their credential will be placed into suspension. Suspended status prohibits individuals from representing themselves as CFEs to the general public and using the credential in any form.

Chapter Scholarships

Our chapter gives away thousands of dollars in scholarships each year to deserving students. Please see our chapter website at <https://middletennesseecfe.wildapricot.org/Scholarships> for more information.



Social Media



Our chapter is now on social media! We are on Facebook at www.facebook.com/ACFENashville and on Twitter @AcfENashville. Please like and follow us! A big thanks to Board Member-at-Large Barry Pruitt for getting us set up. The Chapter plans to set up a LinkedIn page as well in the near future.

Important Meeting Information

Luncheon Reservation/Cancellation Policy—Please Take Note!



Please be sure you make reservations for the luncheons prior to attending. We need the reservations to plan appropriately for our attendees and to eliminate confusion at the luncheons. You will receive a confirmation email after you submit your reservation.

Luncheons are \$10.00 for members who make their reservations by the reservation deadline, usually the COB one week prior to the luncheon. For members who make a reservation but do not attend or call to cancel, the cost is \$20.00. Individuals who attend without making a reservation will also be charged \$20.00.

To cancel your reservation and avoid being invoiced for the event, you must notify the reservationist at mary.cole@nashville.gov before the reservation deadline (usually one week prior to the date of the event). If you cancel after the deadline or fail to appear at the event, you will be invoiced for the full per-attendee cost, including other fees that apply as deemed appropriate by the Board. Any pre-paid fees that you have will be applied to the invoiced amount.

Any invoices that are unpaid after 60 days will result in the suspension of membership in the Middle Tennessee Chapter under the current Chapter Bylaws Section 3.09, Non-payment of Dues*. As a result of suspension, any reservations you make for future events will not be **ACCEPTED** and you will not be allowed to attend Chapter luncheons or take advantage of member benefits until your outstanding invoices are paid.

We typically have a waiting list for our events, so if you must cancel your reservation, **PLEASE** notify the reservationist at mary.cole@nashville.gov as soon as possible, or you may have someone attend in your place to avoid being invoiced for the luncheon. If you have someone take your place, you must notify the reservationist or have the substitution notify the reception/sign-in table at the luncheon when signing-in.

Other exceptions may apply in extreme situations (i.e. death of a family member) and will be reviewed on a case by case basis at the discretion of the Chapter Board at the member's request.

Members, if you are inviting nonmembers to attend who are not first time attendees, please be sure that they are fully aware of their costs and our cancellation and invoicing policy. First-time guests eat free. After a guest's first visit, he or she will be charged \$20.00 according to the non-member fee schedule. No Free Guests are allowed at joint luncheons, due to elevated costs, or Member Benefits Events, such as the December Luncheon or January Member Benefit Training Day.

If you have any questions concerning the luncheon costs or the Chapter's cancellation policy, please feel free to contact Mark Ingram, Chapter Treasurer at mark.ingram@tn.gov.

28th Annual ACFE Global Fraud Conference
June 18-23, 2017
Nashville, TN



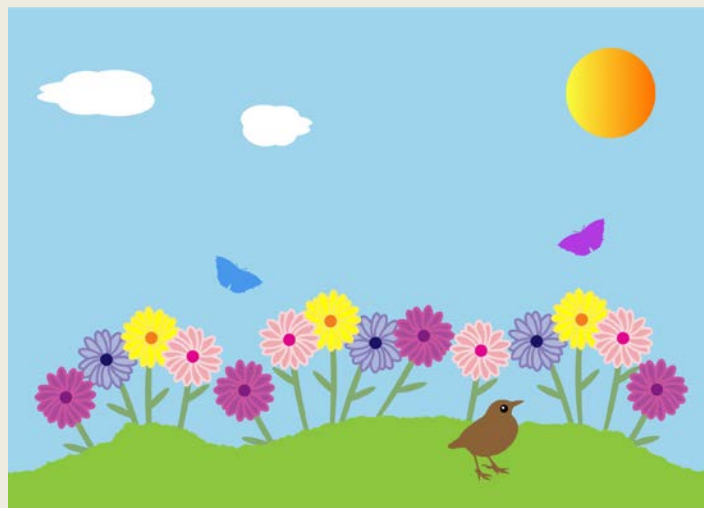
This year's ACFE Global Fraud Conference will be held right here in Nashville at the Music City Center! Thank you to all of the chapter members who volunteered to work at the conference. We have filled all of the volunteer spots!

Information about the conference is available at <http://www.fraudconference.com/>. There are registration discounts available for groups. Please contact Mark Ingram, Chapter Treasurer, at mark.ingram@tn.gov for more information.

In addition, our chapter will be hosting a networking event at the Ryman Auditorium on Tuesday, June 20, to raise money for the ACFE's Ritchie-Jennings Scholarship Fund. See <http://www.fraudconference.com/28th-concert/> for more information.

Chapter Elections

It's time for chapter elections! Voting opens May 12 at 8:00 am and closes on June 6 at 5:00 pm. Chapter members will receive an email with instructions for voting. This year, we have Mark Ingram and Phil McGovern running for treasurer. We also have Phyllis Pickett, David Shipley, and Teri Williams running for the open board member-at-large position. Be sure and cast your vote! The new board will be sworn in at the June social.



April Luncheon Minutes

President Jason Conner called the meeting to order. He reminded everyone to sign in and to make sure they had a parking pass in their vehicle. He then asked attendees to introduce their guests. Drew Hawkins introduced the speaker, John Gawaluck, retired partner from Ernst and Young. Mr. Gawaluck spoke about financial statement fraud. Jonathan Sanders won the door prize. Jason reminded attendees that the chapter would be giving away a CFE study guide at the June social. Jason said that volunteers would be needed for the national ACFE conference, and to sign up if interested. The meeting was then adjourned.

May Luncheon Minutes

President Jason Conner called the meeting to order. He noted that the deadline for scholarship applications had passed, and June 1 was the deadline to notify Mark Ingram if anyone was interested in registering for the CFE exam prep course giveaway. He reminded everyone to vote for treasurer and a board member-at-large in the chapter election. He then asked attendees to introduce their guests. Jason introduced the speaker, Rene Brison, Deputy Chief Investigator with the Tennessee Comptroller of the Treasury. Ms. Brison spoke about a theft in the city of Luttrell, Tennessee. Emad Kaldas won the door prize. Jason again reminded everyone to vote in the chapter election. He noted that the chapter social would take place on June 8 and would be a members-only event. He also noted that the national ACFE conference would take place June 18-23 in Nashville. The meeting was then adjourned.

June Member Social

Our June chapter luncheon will be our Member Social! Please note that this is a member-only event. The social will take place on June 8 at 11:30 AM in the Raintree Room at Scarritt-Bennett. Join us for food, fellowship, scholarship awards, and the induction of the chapter officers for the 2017-2018 chapter year. See you there!



June Luncheon Information



We will hold our June luncheon on Thursday, June 8, 2017, at 11:30 am in the Raintree Room at the Scarritt-Bennett Center. Scarritt-Bennett is located at 1008 19th Avenue South, Nashville, TN 37212. Directions are available at <http://www.scarrittbennett.org/about/maps-directions/>

Important New Parking Information

Due to issues with unauthorized parking by Vanderbilt students, **Scarritt-Bennett is now requiring parking passes for those attending events on its campus.** Scarritt-Bennett asked that our luncheon attendees place the parking pass at the end of this newsletter on their dashboard when parking at Scarritt-Bennett Center. You can also download the parking pass at

<http://www.middletennesseecfe.org/resources/Documents/Luncheon%20parking%20pass%20PDF.pdf>.

This is effective immediately for the November luncheon, and you can use the same pass for subsequent luncheons. Please note that this pass does not guarantee parking will be available. Scarritt-Bennett staff will begin taking license plates and towing repeat offenders without an identifiable pass.

Scarritt-Bennett visitor parking is available in Parking Lot A or Parking Lot B. Please be aware that parking can be limited due to other events held on the same day as ours. Other parking options include the Wesley Place Garage on Scarritt Place between 19th and 21st Avenues or the meters along 19th Avenue. Approximate prices are \$1.00 per half hour and the parking meters are \$1.50 per hour in the Central Business District. Members may want to consider carpooling or bringing cash or change to pay for parking if necessary.



Member Spotlight Thomas Stoquert III, CFE



Thomas is originally from upstate New York. After moving to East TN from New York in August 2004, he moved his family to Murfreesboro in April 2005 where they reside today. He got an early start in the investigations industry when he joined the military after graduating high school. He spent six months in school and finally became a Counterintelligence Special Agent with the Department of Defense serving his country for the next eight years. After spending a year in South Korea with the 102nd Military Intelligence Battalion, Thomas served the remainder of his time at Fort George G. Meade, MD conducting investigations and operations on behalf of the US Army Intelligence and Security Command, Counterintelligence / Counterespionage Battalion, 902nd Military Intelligence Group. Thomas received multiple honors for his service, including 5 medals, 3 service ribbons, and a Certificate of Recognition as a Cold War Veteran signed by the Secretary of Defense. Upon completion of his military service, Thomas moved to Texas and worked as a Private Investigator conducting worker's compensation insurance fraud investigations and surveillance. Over the years he has held various positions within the insurance industry as a supervisor and claims adjuster, as well as a fraud investigator with the State of Tennessee for both the Department of Commerce and Insurance and now, the Bureau of TennCare.

Thomas is a lifelong learner who values education and over the years has earned an A.S. in Business Administration, a B.S. in Management, and an M.B.A. He is a family man who enjoys spending time with his two young boys, ages 10 and 12, who keep him busy with a variety of activities, such as Tae Kwon Do, playing sports, having fun with their dog, watching movies, and of course, playing video games (Thomas doesn't play, just watches – but it still keeps him busy!). He enjoys music and has been a professional drummer for bands playing all over the U.S. Thomas is passionate about veteran causes, assisting the Rutherford County Chamber of Commerce in its Warrior Workforce Initiative and leading in the creation of the Rutherford County Veterans Coalition.



Thomas is a Certified Fraud Examiner (CFE), holds a Graduate Certificate of Business Administration (CBA), is a TN Notary Public, a licensed TN P&C Insurance Agent, and a licensed S.C. P&C Insurance Adjuster. Thomas serves as a committee member on the MTACFE Membership Committee and aside from MTACFE, he holds memberships in a variety of other organizations, including the Association of Certified Fraud Examiners (ACFE), the American Society for Industrial Security (ASIS), the American Management Association (AMA), The Reid Institute, Securities & Insurance Licensing Association (SILA), the National Rifle Association (NRA), Veterans of Foreign Wars (VFW) (Life Member), American Legion (Post 144), the Non-Commissioned Officers Association (NCOA), American Veterans (AMVETS), and Private Officer International (POI) (Life Member) Nashville Chapter 301.

Middle Tennessee ACFE Chapter Library

Did you know that the Middle Tennessee Chapter has a library of fraud-related books that are available to members? To check out books, contact Suzanne Smotherman, chair of the Library Committee, at (615) 253-2020 or Suzanne.Smotherman@tn.gov . The library is currently housed on the 16th floor of the James K. Polk building.



Member Spotlight Volunteers Needed



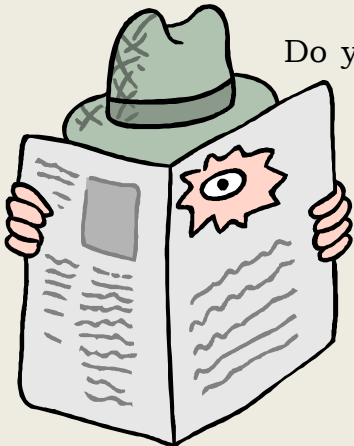
The Newsletter Committee is looking for volunteers to be featured in the Member Spotlight! If you would like to volunteer, please contact a member of the Newsletter Committee. It's a great way to introduce yourself to the chapter!

Speaker Search

Our chapter is always on the lookout for speakers for luncheons, the Member Benefit Day, and the Annual Fraud Conference. If you know of someone who might be willing to speak, please contact the chapter Training Director, Suzzie Singleton, at Suzzie.Singleton@cot.tn.gov .



Newsletter Articles



Do you have a great article to contribute to the Middle Tennessee Chapter, ACFE newsletter? If so, we would love to hear from you! Please contact a member of the Newsletter Committee with your ideas and articles. Remember, you receive points for your articles that count toward the trip to the National ACFE conference! Also, if you note any corrections that need to be made, please contact one of us.

National ACFE Conference Contest Points System



Congratulations to Barry Pruitt, who won an all-expense paid trip to the 2017 national conference, which will be held in Nashville. Start compiling your points for the 2018 national conference! To be eligible for the contest, you must be a member of MTACFE, in good standing, for at least 12 months, and you must have attended a prior MTACFE annual fraud conference. Submit a breakdown of your total points earned between January 2017 and December 2017 to mark.ingram@tn.gov by February 15, 2018. Please have supporting documentation available for your points.

<u>Category</u>	<u>Points</u>
Attending Monthly Chapter Meeting	1 point per meeting
Publish Article in Chapter Newsletter	2 points
Sponsoring a New Member	2 points per new member
Publish member profile in Chapter Newsletter	1 point
Contribution to “Been There, Said That, Done That”	1 point/contribution/month
Publication of Case Results	2 points
Participating as a speaker in the Chapter Speaker’s Bureau	2 points per engagement
Publication of an article in the Association’s <i>Fraud Magazine</i>	3 points
Attending the Chapter’s Annual Fraud Conference	2 points
Service on Chapter Committee	2 points



**ACFE Middle Tennessee Chapter
2016- 2017 Chapter Officers, Board Members, and Committee Members**

CHAPTER OFFICERS AND BOARD MEMBERS

President	Jason Conner, CFE	747-5398	jason.conner@cot.tn.gov
Vice-President	Kesha Thomas, CFE, MCJ	747-5397	kesha.thomas@cot.tn.gov
Past President	Nathan Abbott, CFE, CISA, EA	401-7841	nathan.abbott@cot.tn.gov
President Emeritus	Dennis Dycus, CFE, CPA, CGFM	794-0836	dfdcpa@bellsouth.net
Treasurer	Mark Ingram, CFE	532-5060	mark.ingram@tn.gov
Secretary	Melissa Boaz, CFE, CPA, CGFM, CGMA	747-5305	melissa.boaz@cot.tn.gov
Training Director	Suzzie Singleton, CFE, CGFM	401-3037	suzzie.singleton@cot.tn.gov
Member at Large	Andrew Hawkins, CFE	401-7743	andrew.hawkins@cot.tn.gov
Member at Large	Barry Pruitt, CFE, CFI, CCTA	270-780-2971	bpruitt@houchensindustries.com
Member at Large	Sharon Matheny, CGFM	744-4326	sharonmatheny@hotmail.com

COMMITTEE CHAIRS AND MEMBERS

Website	Nathan Abbott, CFE, CISA, EA (Chair)	401-7841	nathan.abbott@cot.tn.gov
Library	Suzanne Smotherman, CFE, CPA (Chair)	253-2020	suzanne.smotherman@tn.gov
	Melissa Boaz, CFE, CPA, CGFM, CGMA	747-5305	melissa.boaz@cot.tn.gov
Newsletter	Melissa Boaz, CFE, CPA, CGFM, CGMA (Chair)	747-5305	melissa.boaz@cot.tn.gov
	Jennifer Whitsel, CFE, CPA, CGMA	747-5265	jennifer.whitsel@cot.tn.gov
	Melinda Weir, CFE	532-0955	melinda.weir@tn.gov
Hospitality	Mary Cole, CFE, CPA, CGFM (Chair)	862-6407	mary.cole@nashville.gov
	Nicolette Hudson	747-5293	nicolette.hudson@cot.tn.gov
	Judy Tribble, CFE, CPA	253-1760	judy.tribble@tn.gov
	Linda Ciprich, CFE, CIA	366-4441	linda.ciprich@tbr.edu
	Martin Brown, CFE, CPA	747-5391	martin.brown@cot.tn.gov
Membership	Demetra Pulley, CFE, MBA/HRM, CICA (Chair)	327-6424	dpulley@mmc.edu
	Kesha Thomas, CFE, MCJ	747-5397	kesha.thomas@cot.tn.gov
	Nicolette Hudson	747-5293	nicolette.hudson@cot.tn.gov
	Tom Stoquert, CFE, MBA	507-6996	thomas.e.stoquert@tn.gov
	Jessica Scouten, CFE, CPA, MAFF	346-2436	jscouten@kraftcpas.com
Scholarship/ Outreach	Scarlet Sneed, CFE, CPA, CGFM (Chair)	747-5243	scarlet.sneed@cot.tn.gov
	Danny Hall, CFE	741-4314	danny.hall@tn.gov
	Phil Job, CFE, CPA	401-7895	phil.job@cot.tn.gov
	Bridget Carver, CFE	401-7959	bridget.carver@cot.tn.gov
	Melissa DeBerry, CFE	747-5214	melissa.b.deberry@cot.tn.gov
Job Placement Historic	Amanda Cain, CFE	747-5364	amanda.cain@cot.tn.gov
	Britt Wood, CFE, CPA, CGFM, CISA, ACDA (Chair)	401-3006	britt.wood@cot.tn.gov
	Cindy Vaughn, CFE	428-0969	cynthia.vaughn@tn.gov
	Vincent Finamore, CFE	401-7898	vincent.finamore@cot.tn.gov
Nominating	John Gullett, CFE, CPA, LNHA (Chair)	225-1814	jgullett@tsvh.org
	Britt Wood, CFE, CPA, CGFM, CISA, ACDA	401-3006	britt.wood@cot.tn.gov
	Andrew Hawkins, CFE	401-7743	andrew.hawkins@cot.tn.gov
Social Media	Barry Pruitt, CFE, CFI, CCTA (Chair)	270-780-2971	bpruitt@houchensindustries.com
	Teri Williams	782-3953	twilliam@nashville-mdha.org
	Kristina Straumfjord, CFE	224-0832	kristina.straumfjord@mapcoexpress.com
	Jessica Scouten, CFE, CPA, MAFF	346-2436	jscouten@kraftcpas.com
	Danielle Gwin, CFE	401-3038	danielle.gwin@cot.tn.gov
Conference	Bob McCloud, CFE, CGFM	747-5210	bob.mccloud@cot.tn.gov
	Mary Cole, CFE, CPA, CGFM	862-6407	mary.cole@nashville.gov

NOTE: Chapter officers and board members comprise the Annual Fraud Conference Committee

Contact Us



Middle Tennessee Chapter, Association of Certified Fraud Examiners:

Email: info@middletennesseecfe.org

Website: www.middletennesseecfe.wildapricot.org

Mailing address: P.O. Box 198361
Nashville, TN 37219

Follow MTACFE in social media:



www.facebook.com/ACFENashville



www.twitter.com/acfenashville

Association of Certified Fraud Examiners Headquarters:

Email: memberservices@ACFE.com

Website: www.acfe.com

Mailing address: The Gregor Building
716 West Avenue
Austin, TX 78701

Phone: 800-245-3321

512-478-9000

Fax: 512-478-9297

Follow the ACFE in social media:



<https://www.linkedin.com/groups?mostPopular=&gid=66889>



<https://www.facebook.com/AssociationofCertifiedFraudExaminers>



<https://twitter.com/TheACFE>



<https://www.youtube.com/user/TheACFE>



Scarritt-Bennett Center



Scarritt-Bennett Parking Pass

Valid Day of Event Only

Scarritt-Bennett Center



Scarritt-Bennett Parking Pass

Valid Day of Event Only