

Middle Tennessee Chapter



History and Benefits

What is ACFE?

Association of Certified Fraud Examiners

The world's largest anti-fraud organization

- 50,000+ members
- 150+ Chapters worldwide

The premier provider of anti-fraud training and education.

ACFE Mission

- To reduce the incidence of fraud and white-collar crime
- To assist the Membership in fraud detection and deterrence.

What is a CFE?

A Certified Fraud Examiner (CFE) is a specialist educated and trained in the detection and deterrence of a wide variety of white-collar crimes.

ACFE History

Joseph Wells, CPA, an accountant turned FBI agent, recognized that fraud detection and deterrence were handled by:

- accountants who didn't know anything about investigating fraud, and
- investigators who didn't know anything about accounting.

In 1988 the two disciplines were joined when he established ACFE.

The first CFEs were "grandfathered in".

How Do I Become a CFE?

- Be an Associate Member of the ACFE
- Be of high moral character
- Meet the educational and experience requirements
- **Pass the Uniform CFE Examination**
 - Fraud Prevention and Deterrence
 - Financial Transactions
 - Fraud Investigation
 - Legal Elements of Fraud

CFE Exam?

The entire exam is administered on your computer in your office or home

- Review the Fraud Examiner's Manual
- A computer based self study course

Who are CFEs?

- External Auditor
- Internal Auditor
- Forensic Accountant
- Audit Specialist
- Information Systems Auditor
- Audit Consultant
- Management Consultant
- Technical Specialist
- Financial Analyst
- Financial Specialist
- Special Agent
- Private Investigator
- Legal Investigator
- Security Consultant
- Director of Loss Prevention
- Fraud Analyst
- Fraud Investigator
- Risk Manager
- Tax Manager
- Bankruptcy Analyst
- Compliance Officer

Prominent CFEs

Joseph Wells, CFE, CPA, founder and Chairman of the Board of the ACFE

One of the 100 most influential people in accounting
Accounting Today



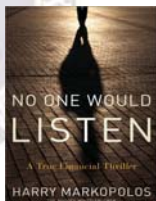
Prominent CFEs

Cynthia Cooper
Discovered the WorldCom fraud



Prominent CFEs

Harry Markopolos
Discovered the Bernard Madoff \$60B fraud



Work Benefits of Being a CFE

- Networking
 - CFE Directory > Loss Prevention > info
- Expert Testimony

Financial Benefits of Being a CFE

- CFEs earn 22% more than Non-CFEs
- State of Tennessee awards 4.5% salary increase for CFE certification*

* Suspended due to budget restrictions

Career Benefits of Being a CFE

These organizations recognize the CFE credentials for their employees:

- State of Tennessee
- FBI
- U.S. Department of Defense
- U.S. Government Accountability Office
- U.S. Postal Inspection Service

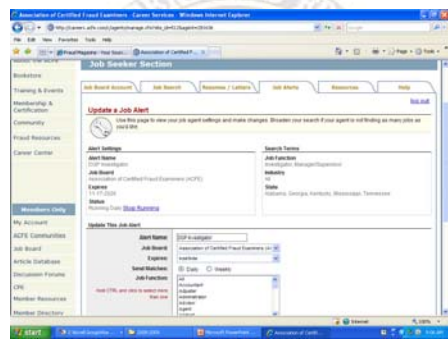
ACFE Website



ACFE Job Board



ACFE Job Seeker Account



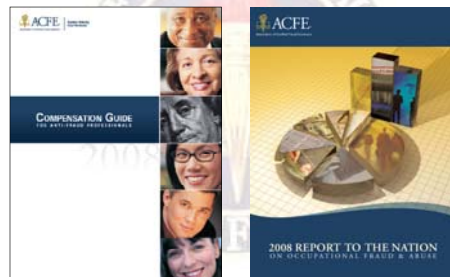
ACFE Scholarships

- Ritchie - Jennings Scholarships – 30 in 2009 @ \$1,000 each

Fraud Magazine



Other ACFE Publications



Middle Tennessee ACFE Chapter History

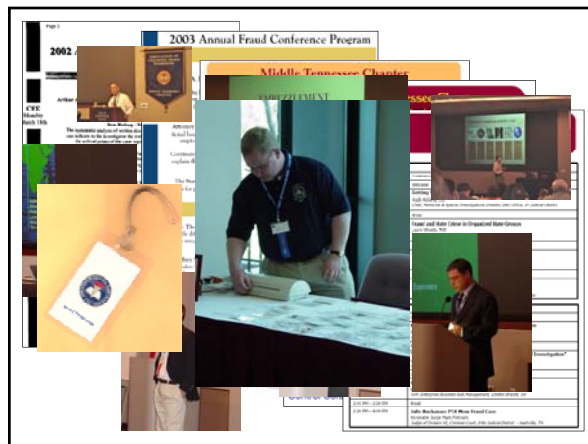
- February 1992, ten CFEs met and discussed the formation of a Middle Tennessee Chapter.
- March 1992, became the 27th Chapter of the ACFE
- 230+ members

Middle Tennessee ACFE Chapter Awards

- 2004 ACFE Chapter of the Year
- Member Awards:
- Mr. Michael Mayhan, CFE – 2008 CFE of the Year
 - Mr. Dennis F. Dycus, CFE – 2004 Outstanding CFE in Government, 2003 Outstanding CPA in Government, 2001 Association Board of Regents, 2005-2009 ACFE Foundation Board of Directors, Association Fellow
 - Mr. Philip Job, CFE – 2000 Walker Award First runner-up (given to the person receiving the highest annual score on the CFE Examination).

Middle Tennessee ACFE Chapter 30+ Hours Training per Year

- 14 Two-Day Fraud Conferences (1996 – 2010)
 - 16 hrs. GASB approved CPE
- 4 One-Day Training seminars (2007 – 2010)
 - 8 hrs. GASB approved CPE – FREE
- Monthly Luncheons (September – May)
 - \$10 @ New Orleans Manor (for members)
 - 1 hr. GASB approved CPE – FREE



Middle Tennessee ACFE Chapter College Scholarship Program

Awarded over \$30,000 in scholarships to students pursuing a career in business, criminal justice, or law.

- In 2009, the Chapter awarded scholarships totaling \$7,000
- Members' children/relatives receive 5 EXTRA points in scoring of their essay

Middle Tennessee ACFE Chapter Habitat for Humanity

- Donations to Middle Tennessee Habitat for Humanity houses



Middle Tennessee ACFE Chapter CFE Exam Scholarship Program

Awarded scholarships and study guides to Chapter members pursuing their CFE

- In 2009, the Chapter awarded two CFE exam-prep discs valued at \$615.00 each to Chapter members.

Middle Tennessee ACFE Chapter Contest for FREE Trip to ACFE Fraud Conference 2010

All Expenses Paid

- Registration
- Travel
- Lodging
- Meals



Middle Tennessee ACFE Chapter FREE Food for Members

- Free December luncheon (no speaker)
- Free June Social dinner (no speaker)



Middle Tennessee ACFE Chapter FREE Certificate Framing

- Pass the CFE Exam and we'll frame your certificate



Middle Tennessee ACFE Chapter Newsletter

- Articles
- Member Profiles
- Upcoming Events



Middle Tennessee ACFE Chapter Website

- www.middletennesseecfe.org
- Conference info
- Luncheon info
- Newsletter
- Members Only section
 - Job Board
 - Directory



Middle Tennessee ACFE Chapter Fraud Library

- Books
- VHS Tapes
- DVDs



Middle Tennessee ACFE Chapter Cost – Benefit

<u>Annual Membership Benefits</u>	
Subsidized Lunch (7 x \$5.00)	\$35.00
December Luncheon	\$15.00
June Dinner	<u>\$20.00</u>
	\$70.00
<u>Annual Cost</u>	
3-year membership (\$50)	\$16.67
1-year membership (\$25)	\$25.00



Middle Tennessee ACFE Chapter Join Now

Membership in ACFE NOT Required

- Applications in lobby
- Applications on chapter website



Middle Tennessee ACFE Chapter Leadership Opportunities

- Officers & Board Members
 - President (FREE trip to ACFE Conference)
 - Vice-President
 - Secretary
 - Treasurer
 - Board Member at Large
 - Board Member at Large
 - Board Member at Large
 - Chapter Training Director



Middle Tennessee ACFE Chapter Committee Opportunities

- Website
- Library
- Newsletter
- Hospitality
- Membership
- Scholarship/Outreach
- Training
- Job Placement
- Historic
- Nominating

